



WWW.SMITTYBILT.COM

## Installation Instructions

### 07-15 JK Front Bumper

Part# 76807 XRC  
Part # 76724 SRC

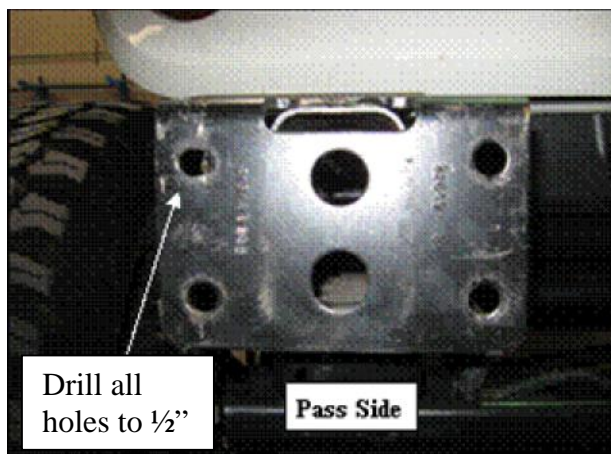
**NOTE: carefully read entire instructions before attempting to install this product.  
It is recommended to have assistance while lifting and installing the bumper.**

Parts Included	Qty	Parts Included	Qty
M10-1.5x40mm Countersunk Bolt	2	M6-1.0x20mm Hex Bolt	4
M10 Hex Nut	2	M6-1.0 Hex Nut	4
M10 Flat Washer	2	M6 Lock Washer	4
M12-1.75x40mm Hex Bolt	4	M6 Flat Washer	4
Flat Washer Large O.D.	8	#8 Phillips Sheet Metal Screw	8
M12-1.75 Hex Nut	4	#8 Plastic Clip Nut	8
M12 Lock Washer	8	Aftermarket Light Bracket	2

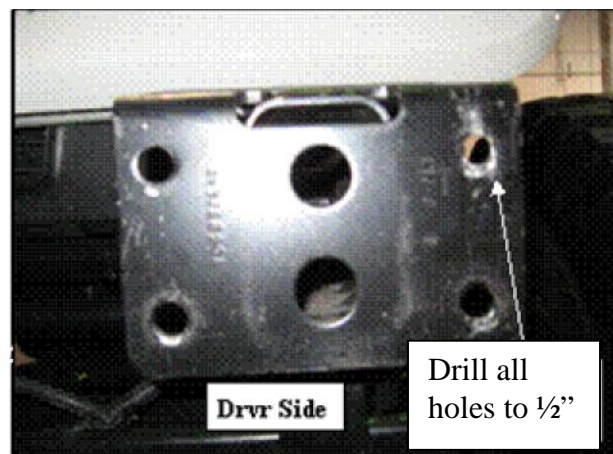
**Step 1:** Remove your front factory bumper. On certain bumpers you may need to remove your factory front plastic frame cover. (Before taking bumper off, make sure you have disconnected the fog lights)

**Step 2:** Remove the OE fog lights, plastic retaining clips and hardware to be used later.

**Step 3:** Drill out all of the mount holes in the front frame mounting plates to 1/2" (Fig A, B)



(Fig A)



(Fig B)

**For Technical Support/Warranty Information please call 310-762-9944**

**Smittybilt, 400 West Artesia Blvd, Compton, CA 90220**



WWW.SMITTYBILT.COM

## Installation Instructions

### 07-15 JK Front Bumper

Part# 76807 XRC  
Part # 76724 SRC

**Step 4:** Install the OE fog lights into the front bumper (93-312CA001 SRC or 93-314DV004 XRC) front bumper using the previously removed OE plastic retaining clips. And hardware. (Fig. C)

*NOTE: If installing aftermarket lights install the light mount bracket to the lower bumper light mounting holes using the (2 per side) supplied 1/4"-20 X 3/4" bolts and nuts.*



**Note:** If OE hardware is not re-useable, use included plastic nut clips and #8 screws.

**Step 5:** Position the bumper up on the front of your jeep by aligning the welded studs on the bumper into the holes on the front frame mounting plates. Secure studs using 1 ea flat washer, lock washer and nut. Insert 12 x 40 mm hex bolt with 1 ea flat washer and lock washer in the reaming two holes. (Fig C, D) Level the bumper and then proceed to torque to 60 ft lbs.

For Technical Support/Warranty Information please call 310-762-9944

Smittybilt, 400 West Artesia Blvd, Compton, CA 90220



WWW.SMITTYBILT.COM

**Installation Instructions**  
07-15 JK Front Bumper  
Part# 76807 XRC  
Part # 76724 SRC



(Fig C, Driver side-Inside)



(Fig D, Driver side outside)

**Step 6:** Using the two outer lower center plate mounting holes on the bottom of the front bumper as a guide, center punch and drill through the factory cross member using a 13/32 "drill bit. (Fig E) Once drilled secure with included M10 hardware. (Counter Sunk bolt, washer, nut)



Always use extreme caution when cutting/trimming. Touch up area with a primer or something similar before installing bolts.

**Step 7:** Reconnect OE fog light wiring harness.

**Step 6:** Installation is now complete. ( Fig F,G)

**For Technical Support/Warranty Information please call 310-762-9944**

**Smittybilt, 400 West Artesia Blvd, Compton, CA 90220**



WWW.SMITTYBILT.COM

**Installation Instructions**  
**07-15 JK Front Bumper**  
Part# 76807 XRC  
Part # 76724 SRC



(Fig E)



(Fig F, XRC Bumper)



**For Technical Support/Warranty Information please call 310-762-9944**

**Smittybilt, 400 West Artesia Blvd, Compton, CA 90220**



WWW.SMITTYBILT.COM

**Installation Instructions**  
**07-15 JK Front Bumper**  
 Part# 76807 XRC  
 Part # 76724 SRC

Use this only as a guide for hardware without a called out torque specification in the instruction manual.

<b>Bolt Torque and ID</b>						
<b>Decimal System</b>			<b>Metric System</b>			
All Torques in Ft. Lbs. Maximums						
Bolt Size	Grade 5	Grade 8	Bolt Size	Class 9.8	Class 10.9	Class 12.9
5/16	15	20	M6	5	9	12
3/8	30	45	M8	18	23	27
7/16	45	60	M10	32	45	50
1/2	65	90	M12	55	75	90
9/16	95	130	M14	85	120	145
5/8	135	175	M16	130	165	210
3/4	185	280	M18	170	240	290

<p>1/2-13x1.75 HHCS                  D T L X</p>	<p>Grade 5    Grade 8                  (No. of Marks + 2)</p>	<p>M12-1.25x50 HHCS                  D T L X</p>
<p>G = Grade (Bolt Strength)                  D = Nominal Diameter (Inches)                  T = Thread Count (Threads per Inch)                  L = Length (Inches)                  X = Description (Hex Head Cap Screw)</p>		<p>P = Property Class (Bolt Strength)                  D = Nominal Diameter (Millimeters)                  T = Thread Pitch (Thread Width, mm)                  L = Length (Millimeters)                  X = Description (Hex Head Cap Screw)</p>

Compliment your seat brackets with other quality parts from Smittybilt.



Seating



Cage Kits



Soft Goods

**For Technical Support/Warranty Information please call 310-762-9944**

**Smittybilt, 400 West Artesia Blvd, Compton, CA 90220**



WWW.SMITTYBILT.COM

**Installation Instructions**  
**07-15 JK Front Bumper**  
 Part# 76807 XRC  
 Part # 76724 SRC

**Limited Warranties**

Smittybilt's products are covered under the following limited warranties only. Note that the duration of the limited warranty differs according to the material and finish of the product purchased. Subject to the duration and conditions of the limited warranty stated below, Smittybilt warrants to the original retail purchaser that its products are free from defects in material and workmanship. All other warranties and representations express or implied, are hereby disclaimed, including fitness for merchantability and buyer's intended use or purpose. All parts are sold "AS IS" except for the limited warranties granted herein. Buyer assumes all risks as to the selection, suitability and performance of all goods and products selected. This limited warranty does not cover damage or impairment in any part due to misuse, improper installation, accident or contact with on-road or off-road hazards, product modification, improper or inadequate cleaning and/or maintenance. Smittybilt is not responsible for items damaged during shipping. This warranty is not transferable from the original buyer. For the original Buyer to be eligible for the limited warranty coverage, the Buyer must provide proof of purchase. Smittybilt strongly recommends returning the warranty registration card. Customer's remedy hereunder shall be limited only to repair or replacement (at Smittybilt's option) of any defective part(s) returned to Smittybilt at customer's expense. The determination of whether or not a returned part is defective or subject to coverage under the limited warranties stated herein shall be made at Smittybilt's sole discretion.

To assure product quality, Smittybilt reserves the right to change product design, material, specification and finishes without prior notice to customers. This limited warranty gives you specific legal rights and you may also have other rights, which may vary from state to state. Some states do not allow limitations on how long an implied warranty lasts, so the above limitations may not apply as to you. Also, some states do not allow the exclusion or limitation of incidental or consequential damages, so the above limitations or exclusions may not apply to you. Smittybilt reserves the right to discontinue product lines and substitute products, or provide other remedies than those listed in this limited warranty for those discontinued products.

**Warning**

Rollover and other types of vehicle accidents may result in serious injury or death to you, your passengers and others sharing the road. Smittybilt accessories are decorative and are not intended to reduce or avoid injury or damage in the event of an accident. The weight and location of Smittybilt accessories may affect your vehicles' handling, stability and performance, creating an increased risk of accident or rollover. Before installing any accessory, check state laws and assure that the accessory will not obscure any lights or interfere with proper operation on your vehicle's safety equipment. Consult your owner's manual and the Smittybilt instructions, or additional safety information. Smittybilt products, nor the warnings contained herein, are not a substitute for your safe driving. Don't drink and drive, always use seat belts and don't drive faster than conditions permit.

**For Technical Support/Warranty Information please call 310-762-9944**

**Smittybilt, 400 West Artesia Blvd, Compton, CA 90220**